

Steve Sisolak  
*Governor*



Richard Whitley  
*Director*

State of Nevada  
Department of Health and  
Human Services

---

Seclusion and Restraint Report

Division of Public and Behavioral Health: Clinical Services

Lisa Sherych, Administrator  
Joanne Malay, Deputy Administrator





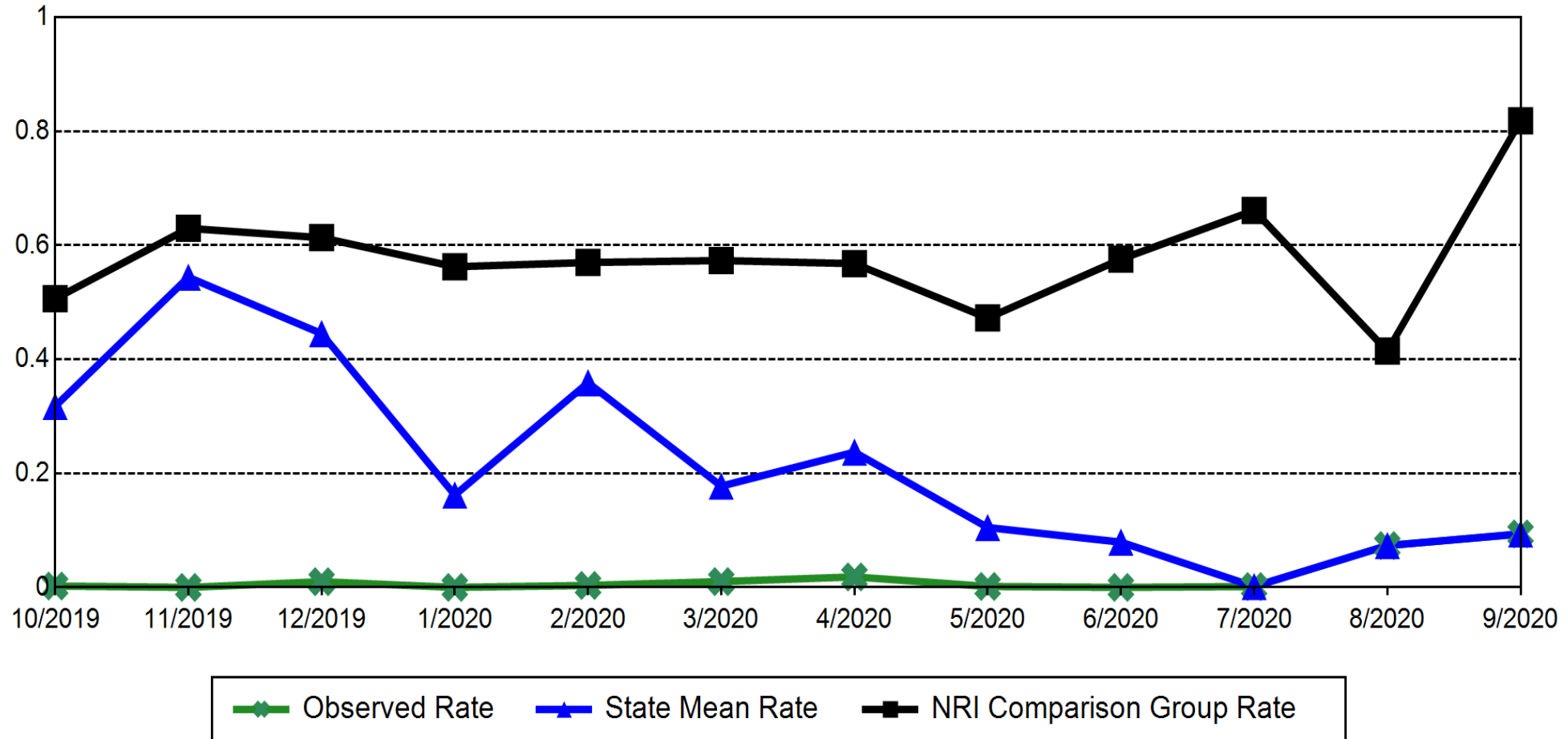
# Agenda

1. NNAMHS Restraint Data
2. NNAMHS Seclusion Data
3. SNAMHS Restraint Data
4. SNAMHS Seclusion Data
5. STATEWIDE - Overall Use Of Restraints
6. STATEWIDE - Overall Use Of Seclusion
7. NNAMHS: Dini Townsend Hospital
8. SNAMHS: Rawson-Neal Hospital
9. Adult Forensic Facilities: Evaluation Clients
10. Adult Forensic Facilities: Restoration Clients
11. Adult Forensic Facilities: Long-term Commitments

# PHYSICAL RESTRAINT (NUMBER OF HOURS CLIENTS SPENT IN PHYSICAL RESTRAINT FOR EVERY 1000 INPATIENT HOURS), ADULTS

## NNAMHS RESTRAINT DATA

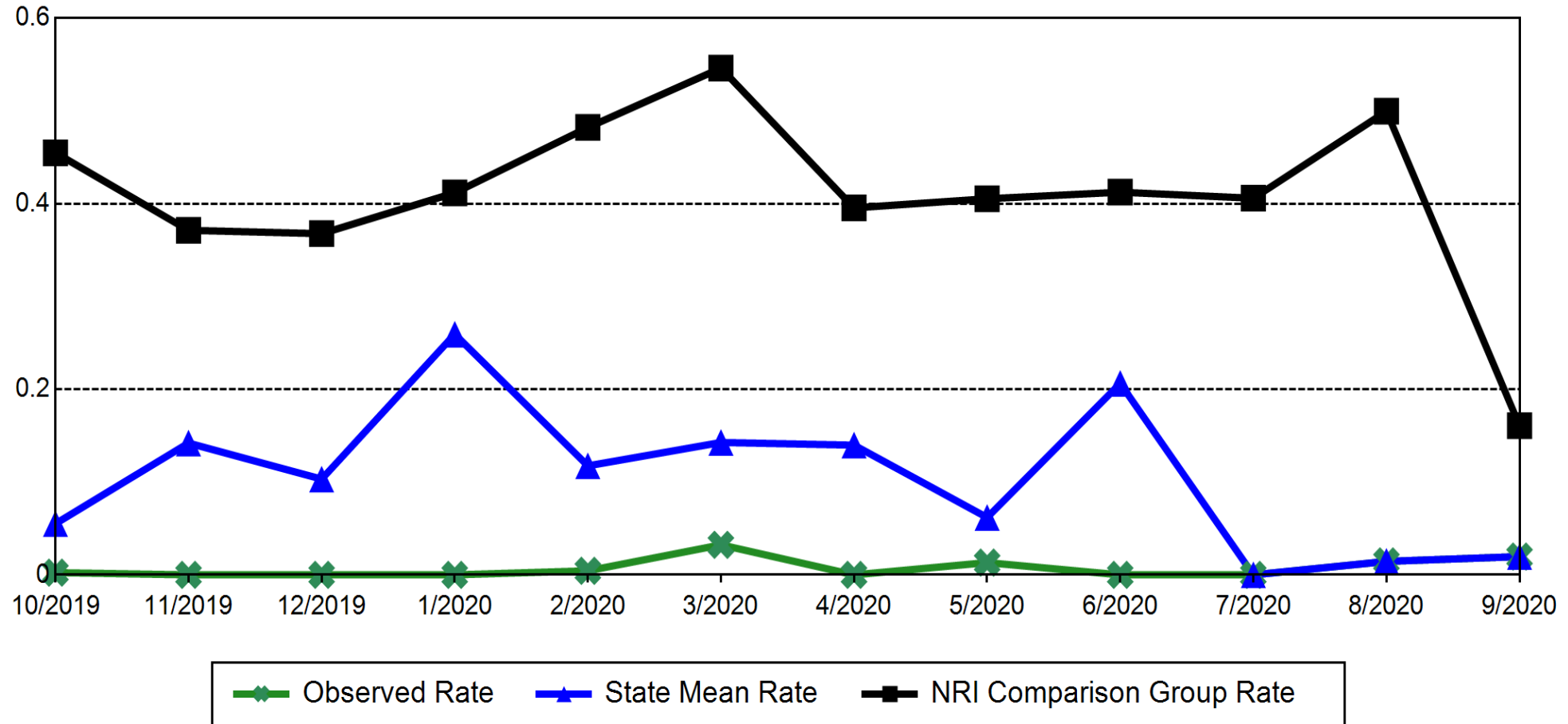
(NRI-HBIPS COMPARATIVE REPORT SEPTEMBER 2020)



# SECLUSION (NUMBER OF HOURS CLIENTS SPENT IN SECLUSION FOR EVERY 1000 INPATIENT HOURS), ADULTS

## NNAMHS SECLUSION DATA

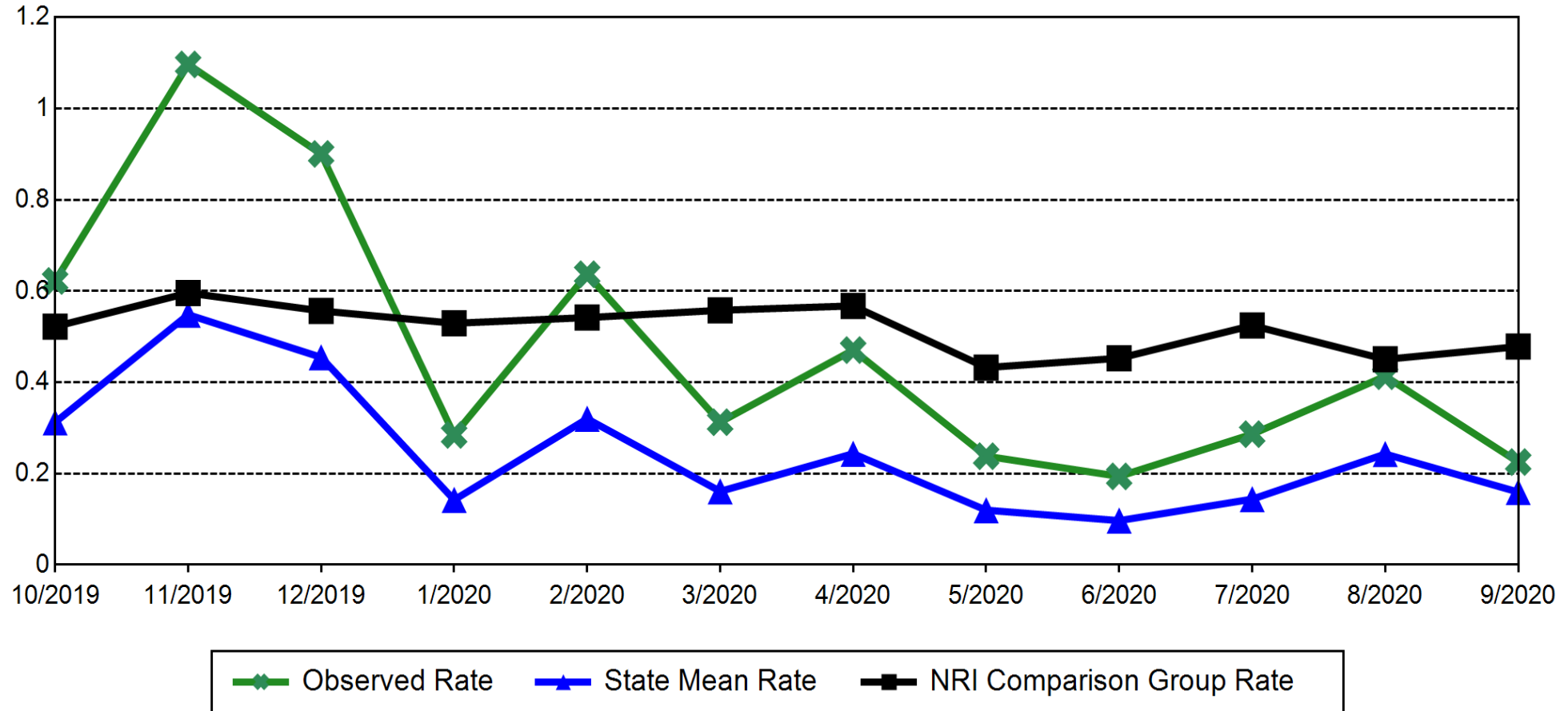
(NRI-HBIPS COMPARATIVE REPORT SEPTEMBER 2020)



# PHYSICAL RESTRAINT (NUMBER OF HOURS CLIENTS SPENT IN PHYSICAL RESTRAINT FOR EVERY 1000 INPATIENT HOURS), ADULTS

## SNAMHS RESTRAINT DATA

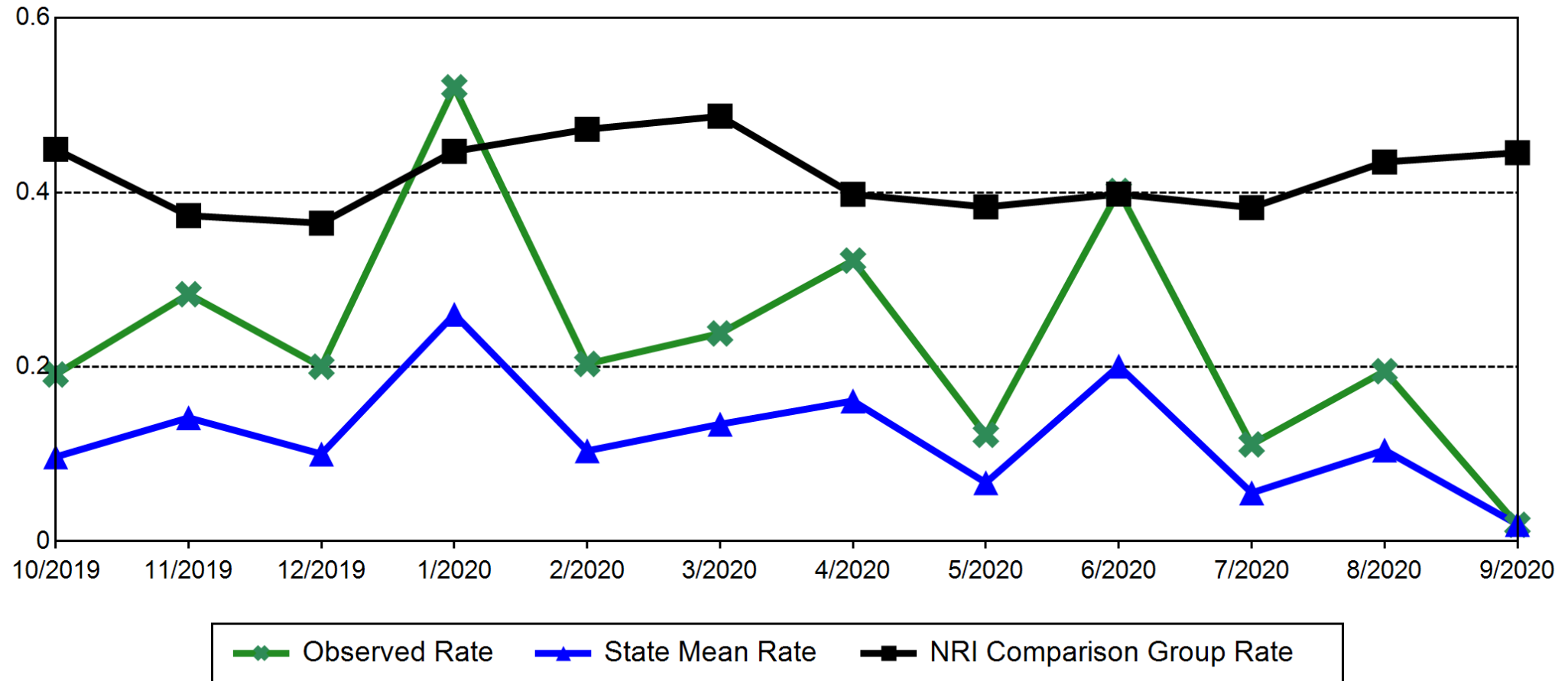
(NRI-HBIPS COMPARATIVE REPORT SEPTEMBER 2020)



# SECLUSION (NUMBER OF HOURS CLIENTS SPENT IN SECLUSION FOR EVERY 1000 INPATIENT HOURS), ADULTS

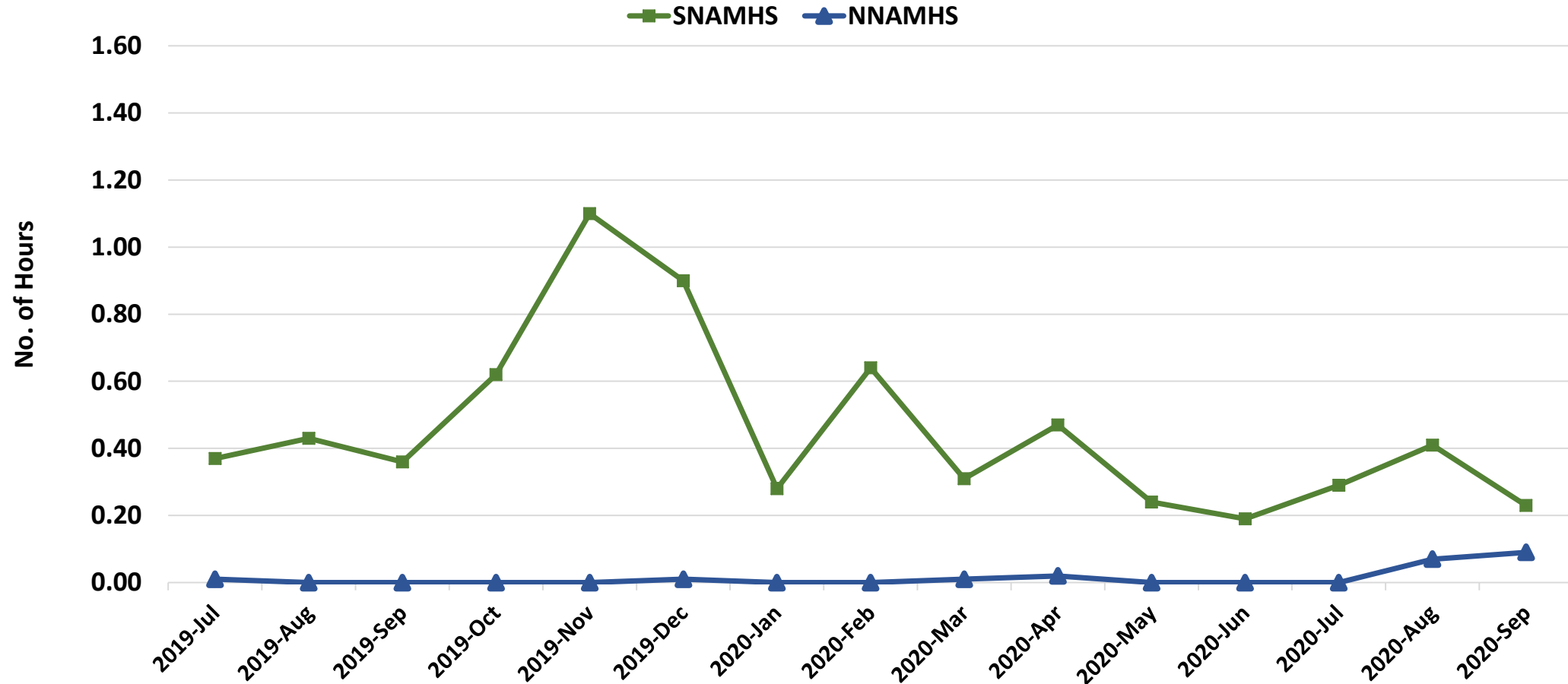
## SNAMHS SECLUSION DATA

(NRI-HBIPS COMPARATIVE REPORT SEPTEMBER 2020)



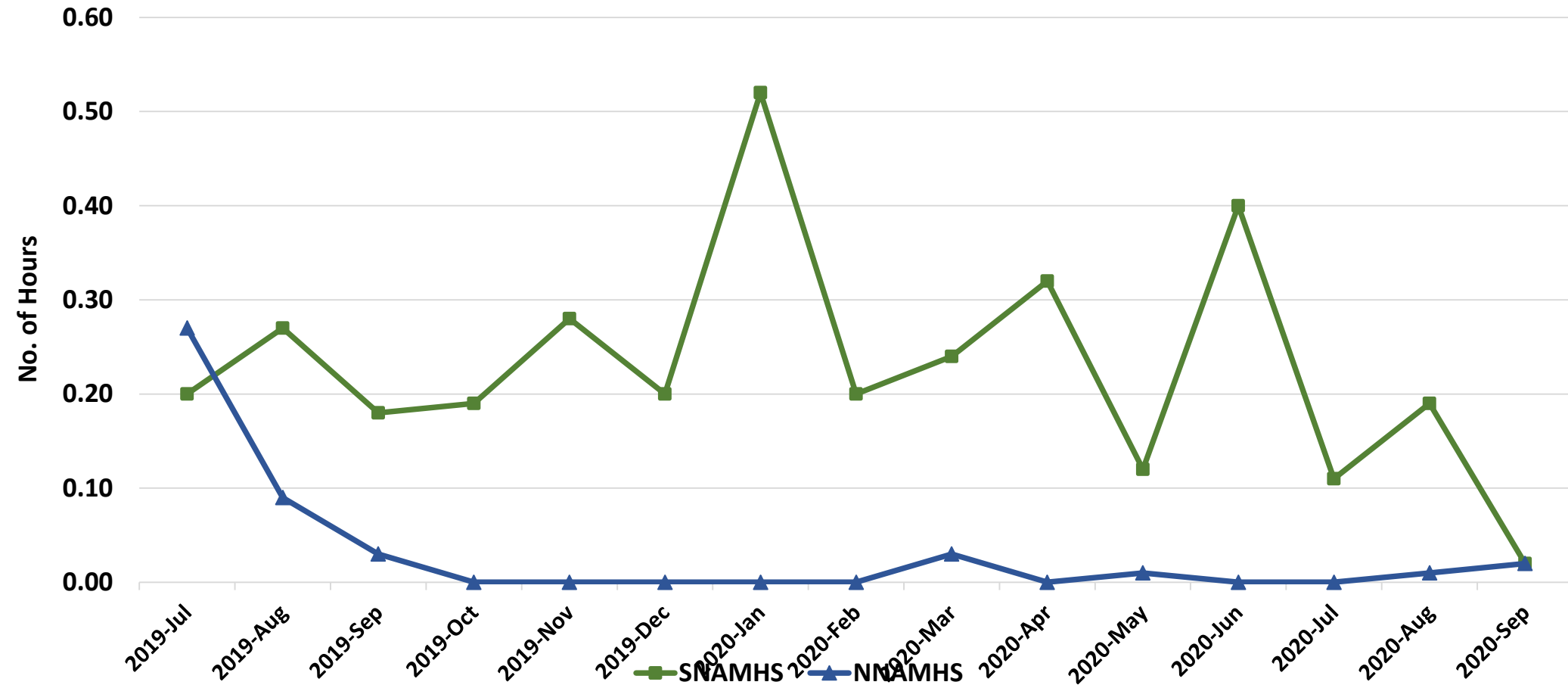
# STATEWIDE - Overall Use of Restraints (number of hours clients spent in restraints for every 1000 inpatient hours)

NRI-HBIPS Comparative Report HAP & BHC SEPTEMBER 2020



# STATEWIDE - Overall Use of Seclusion (number of hours clients spent in seclusion for every 1000 inpatient hours)

NRI-HBIPS Comparative Report HAP & BHC SEPTEMBER 2020

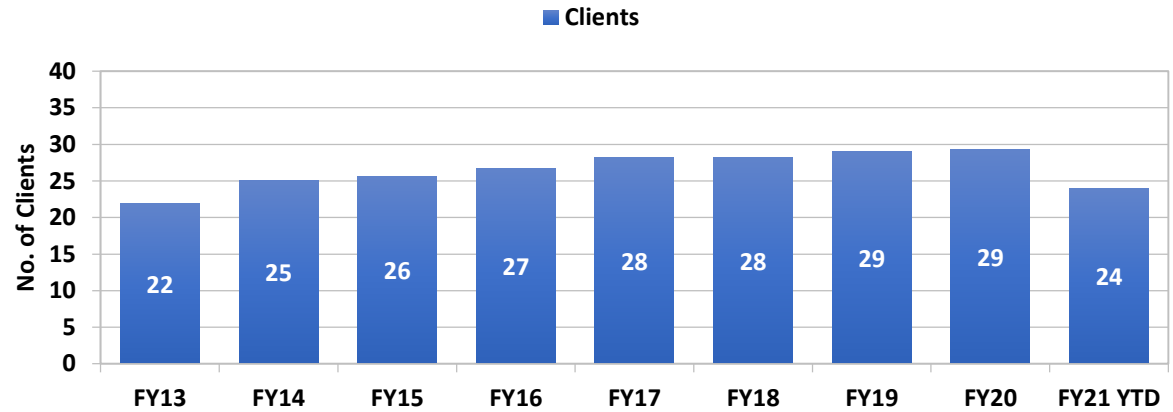




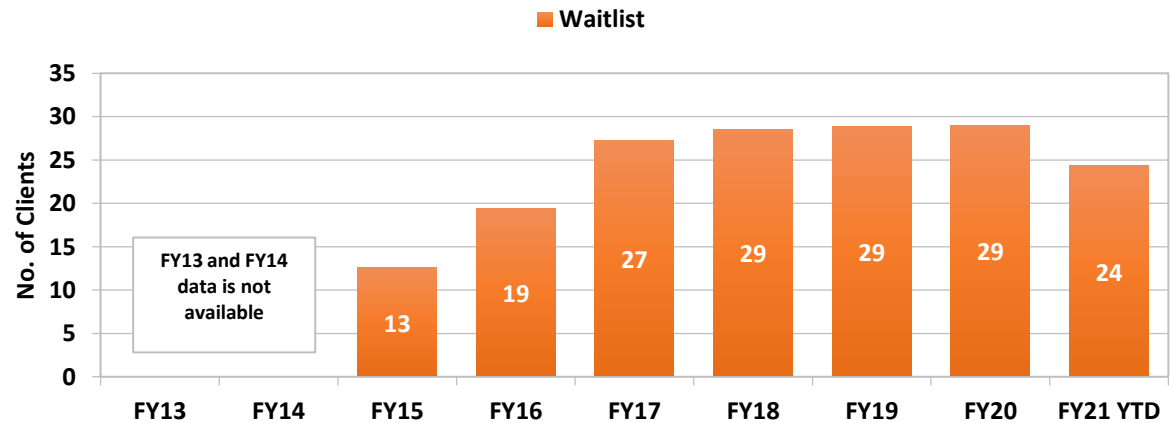
# NNAMHS: DINI TOWNSEND HOSPITAL (DHHS Director's Office)

Month	Clients	Average Length of Stay (Days)	Waitlist
Jul-18	26	15	25
Aug-18	26	14	26
Sep-18	28	21	28
Oct-18	30	15	30
Nov-18	30	21	30
Dec-18	29	20	29
Jan-19	30	31	30
Feb-19	30	17	30
Mar-19	30	21	30
Apr-19	30	64	30
May-19	30	38	30
Jun-19	29	46	29
Jul-19	28	37	28
Aug-19	29	37	29
Sep-19	30	30	30
Oct-19	29	37	29
Nov-19	29	25	29
Dec-19	30	47	30
Jan-20	29	71	29
Feb-20	29	50	28
Mar-20	31	30	27
Apr-20	29	35	30
May-20	29	18	30
Jun-20	29	21	29
Jul-20	29	23	29
Aug-20	23	40	25
Sep-20	20	37	19

NNAMHS Dini-Townsend Hospital Clients - Fiscal Year Averages

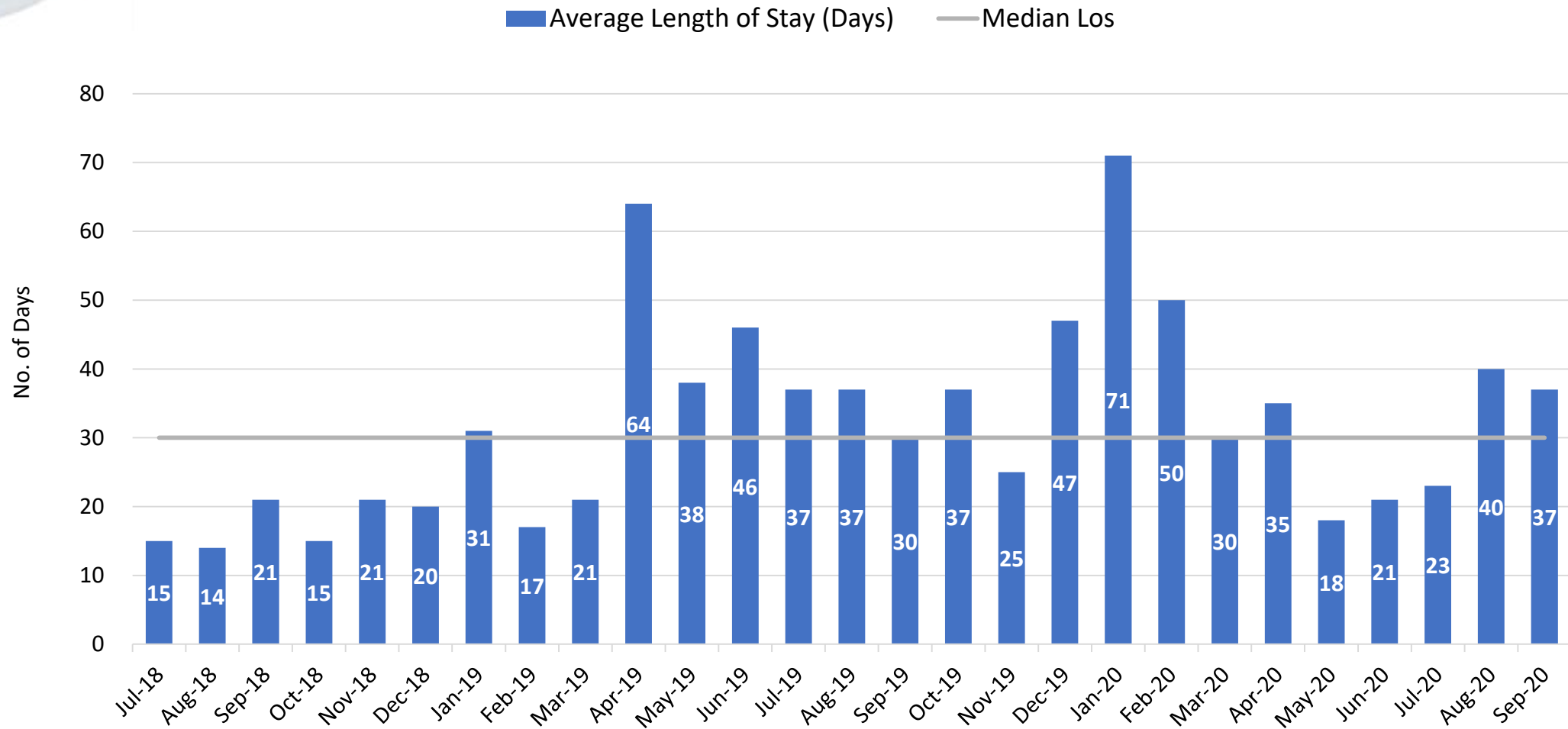


NNAMHS Dini-Townsend Hospital Waitlist - Fiscal Year Averages



# NNAMHS: DINI TOWNSEND HOSPITAL

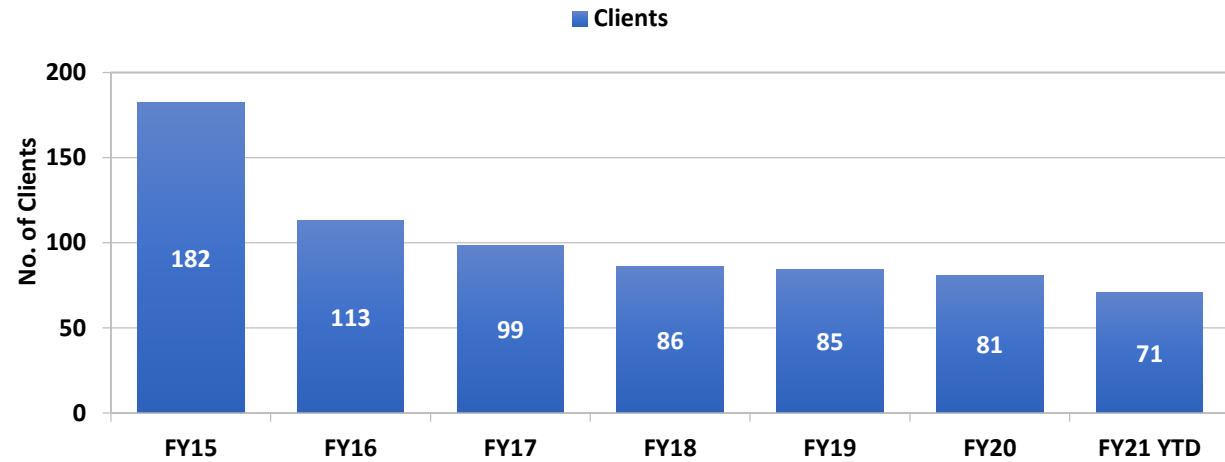
## Average Length of Stay (Days)



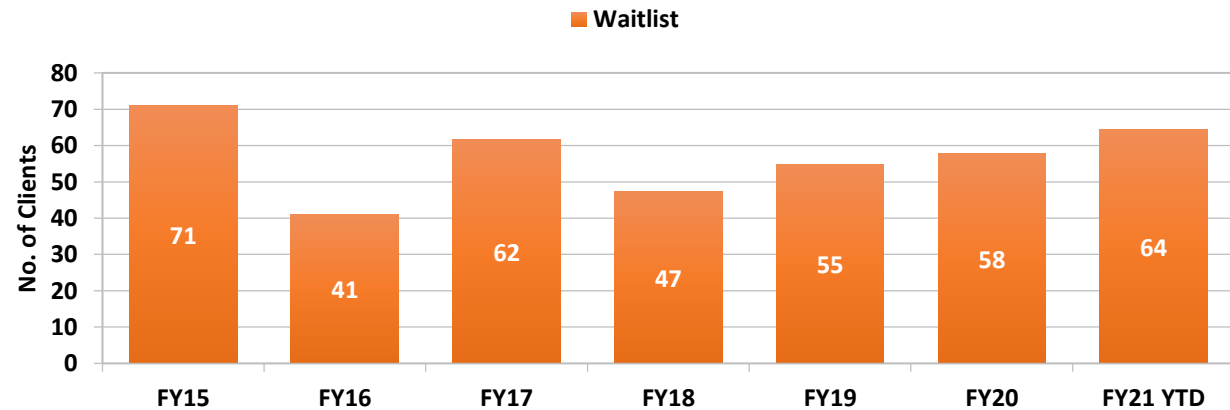
# SNAMHS: RAWSON-NEAL HOSPITAL (DHHS Director's Office)

Month	Clients	Average Length of Stay (Days)	Waitlist
Jul-18	87	17	55
Aug-18	87	18	65
Sep-18	87	19	57
Oct-18	87	12	67
Nov-18	86	16	58
Dec-18	83	14	64
Jan-19	81	17	63
Feb-19	78	16	53
Mar-19	86	12	48
Apr-19	87	14	43
May-19	81	13	41
Jun-19	85	12	45
Jul-19	85	10	43
Aug-19	84	12	54
Sep-19	85	14	61
Oct-19	72	19	74
Nov-19	83	25	58
Dec-19	86	13	54
Jan-20	85	21	68
Feb-20	82	13	55
Mar-20	86	12	65
Apr-20	83	14	54
May-20	70	14	54
Jun-20	70	15	55
Jul-20	68	18	70
Aug-20	71	17	63
Sep-20	74	20	60

SNAMHS Rawson-Neal Hospital Clients - Fiscal Year Averages

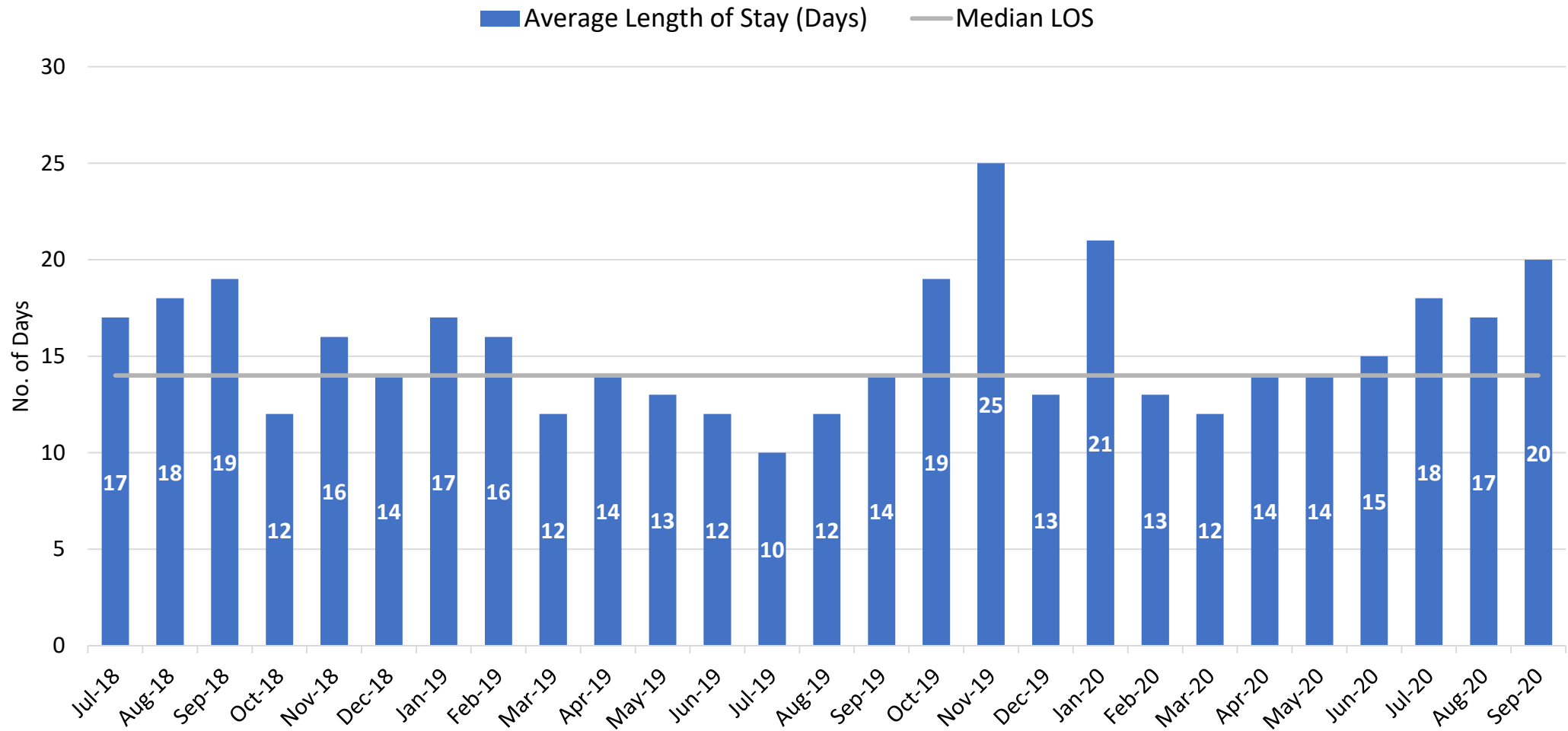


SNAMHS Rawson-Neal Hospital Waitlist - Fiscal Year Averages



# SNAMHS: RAWSON-NEAL HOSPITAL

## Average Length of Stay (Days)

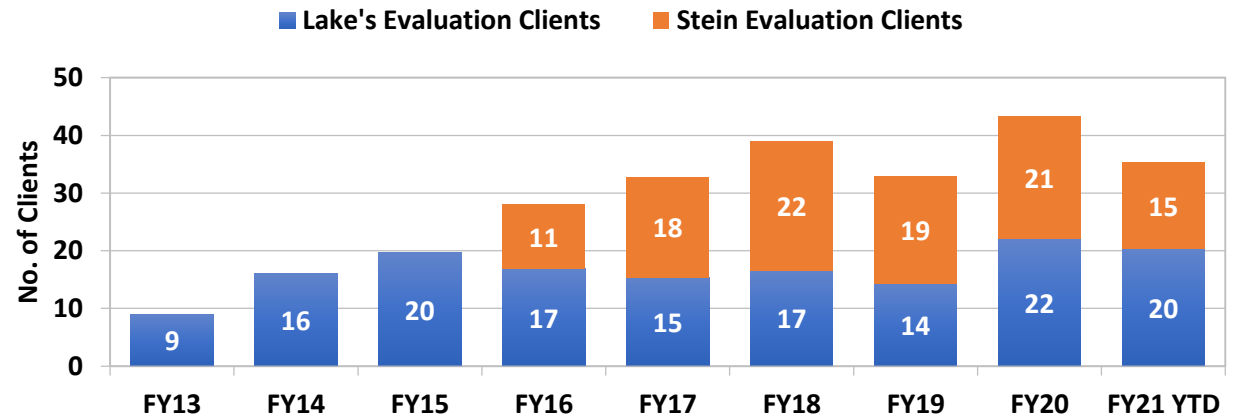


# ADULT FORENSIC FACILITIES: EVALUATION CLIENTS (DHHS Director's Office)

Month	Lake's Evaluation Clients	Lake's Average Length of Stay (Days)	Stein Evaluation Clients	Stein Average Length of Stay (Days)
Jul-18	18	120	27	86
Aug-18	16	98	26	93
Sep-18	15	60	24	110
Oct-18	14	127	16	89
Nov-18	12	86	17	108
Dec-18	11	118	19	77
Jan-19	12	78	14	56
Feb-19	11	107	10	71
Mar-19	15	74	14	63
Apr-19	15	36	17	62
May-19	16	57	19	60
Jun-19	16	71	20	56
Jul-19	18	71	22	48
Aug-19	19	41	22	90
Sep-19	22	42	16	86
Oct-19	23	113	17	48
Nov-19	25	73	20	58
Dec-19	26	60	27	45
Jan-20	22	77	28	70
Feb-20	20	105	26	75
Mar-20	21	113	24	77
Apr-20	23	104	16	67
May-20	23	127	19	55
Jun-20	22	113	18	66
Jul-20	21	94	17	61
Aug-20	21	83	14	135
Sep-20	19	102	14	98

Fiscal Year Averages	Lake's Evaluation Clients	Lake's Average Length of Stay (Days)	Stein Evaluation Clients	Stein Average Length of Stay (Days)
FY13	9	98		
FY14	16	61		
FY15	20	94		
FY16	17	84	11	88
FY17	15	90	18	89
FY18	17	75	22	89
FY19	14	86	19	78
FY20	22	87	21	65
FY21 YTD	20	93	15	98

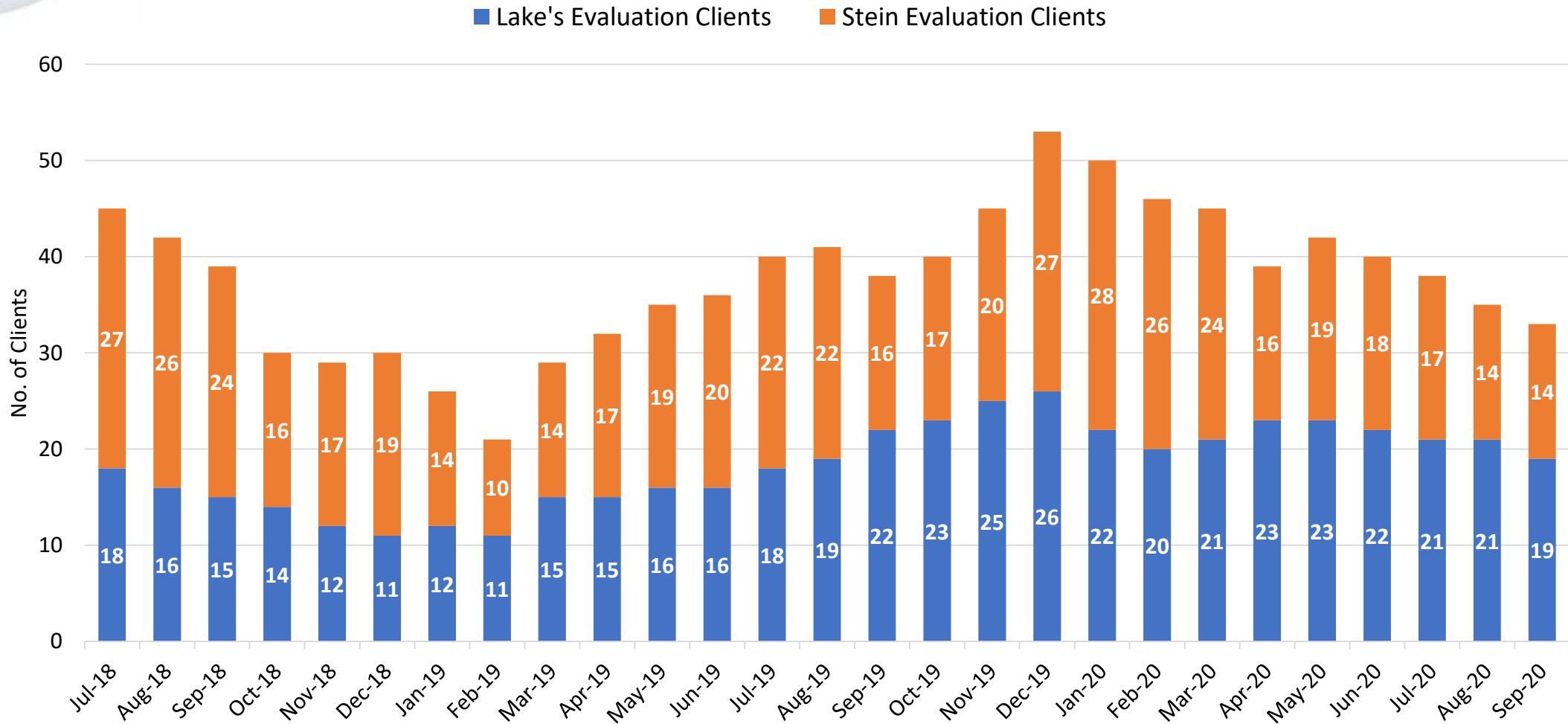
Evaluation Clients - Fiscal Year Averages





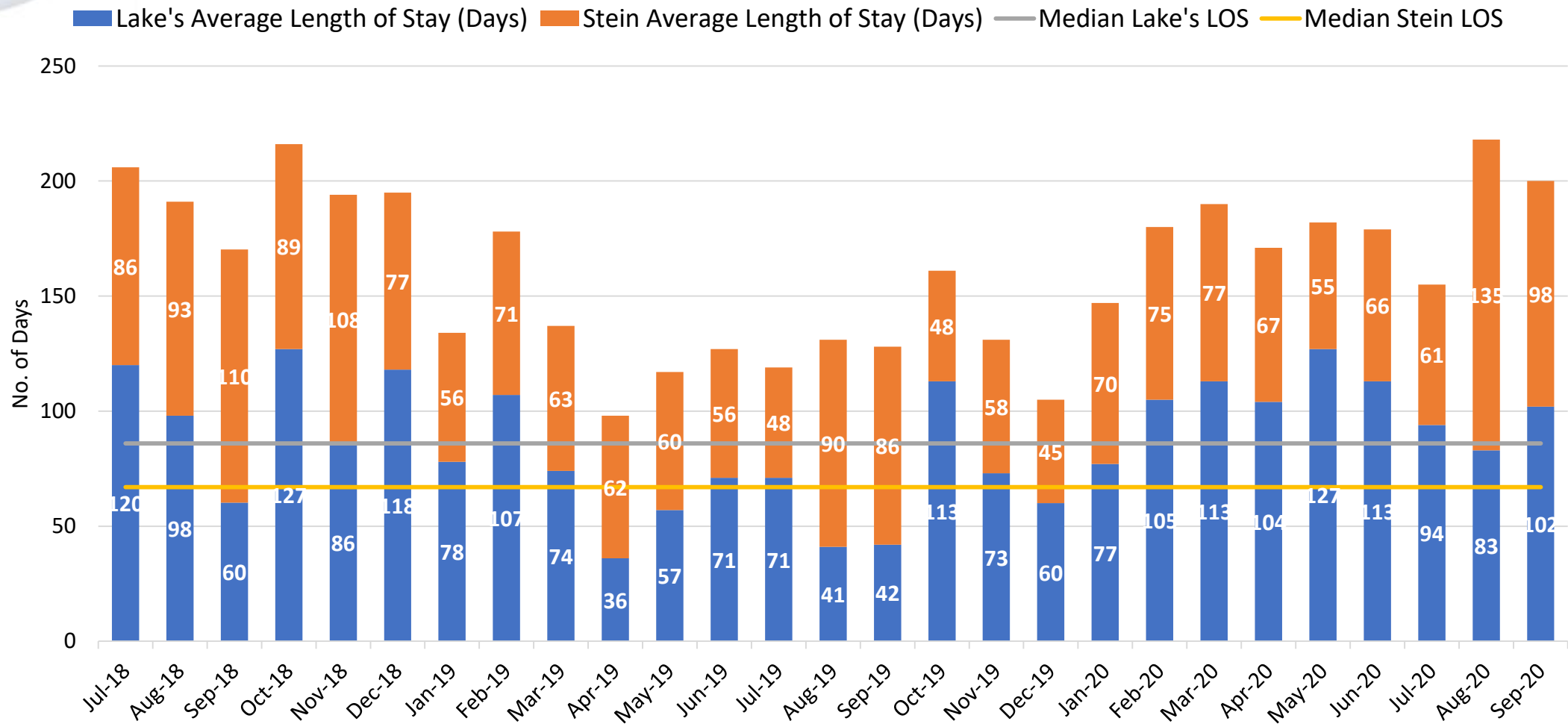
# ADULT FORENSIC FACILITIES: EVALUATION CLIENTS

## Number of Clients



# ADULT FORENSIC FACILITIES: EVALUATION CLIENTS

## Average Length of Stay (Days)

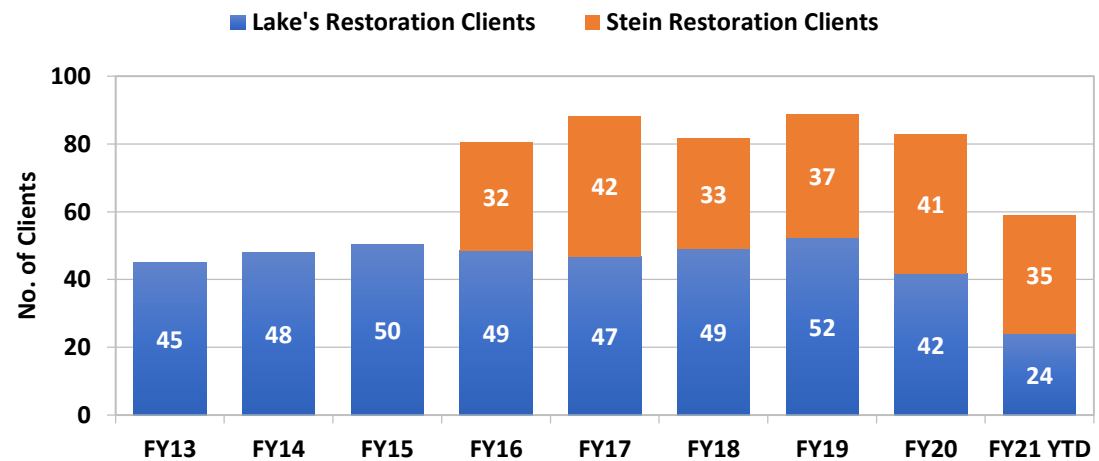


# ADULT FORENSIC FACILITIES: RESTORATION CLIENTS (DHHS Director's Office)

Month	Lake's Restoration Clients	Lake's Average Length of Stay (Days)	Stein Restoration Clients	Stein Average Length of Stay (Days)	Statewide Restoration Waitlist	Statewide Average Wait (Days)
Jul-18	45	102	38	55	22	3
Aug-18	50	100	36	70	16	5
Sep-18	52	93	35	69	16	6
Oct-18	56	106	34	60	17	5
Nov-18	55	92	32	111	22	4
Dec-18	54	103	31	67	24	5
Jan-19	55	114	39	71	16	6
Feb-19	55	91	38	57	15	5
Mar-19	49	115	36	84	19	5
Apr-19	52	95	37	77	22	4
May-19	52	129	37	93	16	4
Jun-19	53	107	45	61	15	6
Jul-19	50	133	47	66	16	6
Aug-19	50	93	49	65	18	5
Sep-19	46	103	51	70	24	5
Oct-19	43	105	49	86	15	4
Nov-19	39	68	44	63	13	6
Dec-19	36	95	41	102	16	4
Jan-20	42	114	37	89	15	3
Feb-20	44	85	39	81	17	5
Mar-20	44	83	39	79	18	7
Apr-20	38	119	35	74	13	4
May-20	36	87	30	59	13	4
Jun-20	33	100	33	59	10	4
Jul-20	28	114	30	56	15	4
Aug-20	24	118	31	97	11	3
Sep-20	19	149	43	72	12	4

Fiscal Year Averages	Lake's Restoration Clients	Lake's Average Length of Stay (Days)	Stein Restoration Clients	Stein Average Length of Stay (Days)	Statewide Restoration Waitlist	Average Wait (Days)
FY13	45	81				
FY14	48	96				
FY15	50	92				
FY16	49	108	32	88	17	24
FY17	47	97	42	105	18	5
FY18	49	101	33	94	16	5
FY19	52	104	37	73	18	5
FY20	42	99	41	74	16	5
FY21 YTD	24	127	35	75	13	4

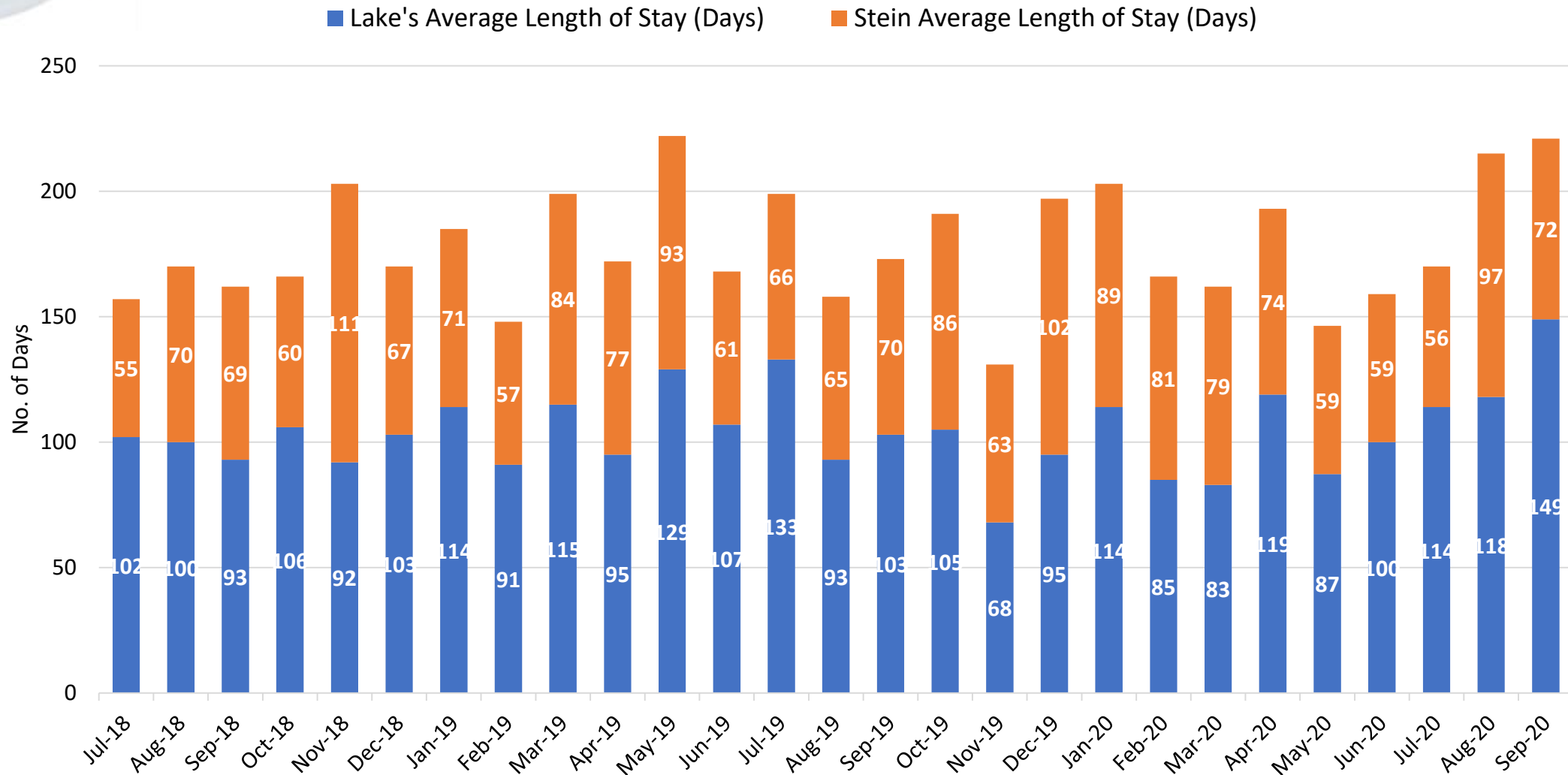
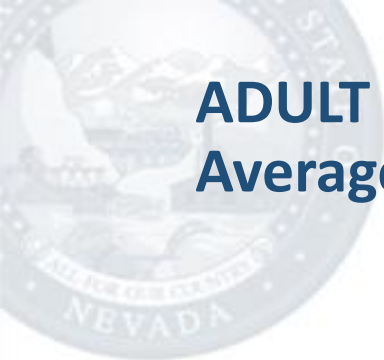
Restoration Clients - Fiscal Year Averages





# ADULT FORENSIC FACILITIES: RESTORATION CLIENTS

## Average Length of Stay (Days)

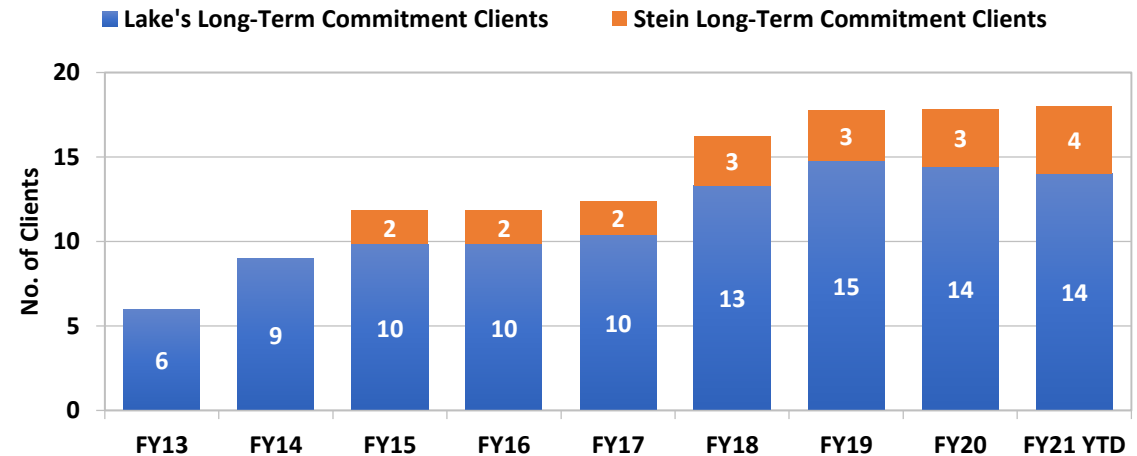


# ADULT FORENSIC FACILITIES: LONG-TERM COMMITMENTS (DHHS Director's Office)

Month	Lake's Long-Term Commitment Clients	Lake's Average Days since Admission	Stein Long-Term Commitment Clients	Stein Average Days since Admission
Jul-18	14	1,770	3	945
Aug-18	14	1,801	3	976
Sep-18	14	1,831	3	1,006
Oct-18	15	1,739	3	1,037
Nov-18	15	1,769	3	1,067
Dec-18	15	1,799	3	1,098
Jan-19	15	1,790	3	1,129
Feb-19	15	1,818	3	1,157
Mar-19	15	1,849	3	1,188
Apr-19	15	1,879	3	1,218
May-19	15	1,910	3	1,249
Jun-19	15	1,940	3	1,279
Jul-19	15	1,971	3	1,310
Aug-19	15	2,002	3	1,341
Sep-19	15	2,032	3	1,371
Oct-19	15	2,063	3	1,402
Nov-19	15	2,093	3	1,432
Dec-19	14	2,251	3	1,463
Jan-20	14	2,282	3	1,494
Feb-20	14	2,311	4	1,130
Mar-20	14	2,342	4	1,161
Apr-20	14	2,372	4	1,191
May-20	14	2,403	4	1,222
Jun-20	14	2,433	4	1,252
Jul-20	14	2,464	4	1,283
Aug-20	15	2,329	4	1,314
Sep-20	13	2,511	4	1,344

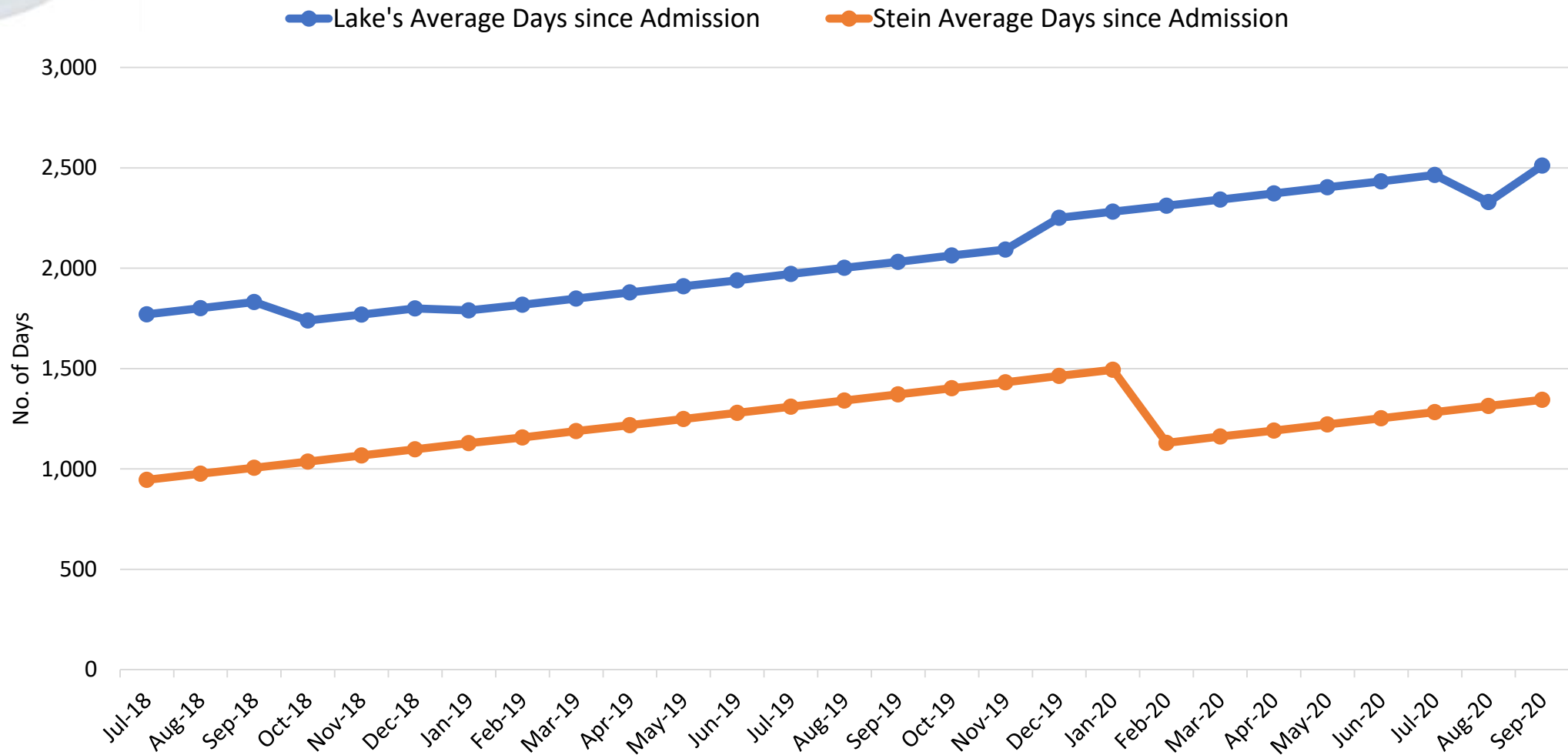
Fiscal Year Averages	Lake's Long-Term Commitment Clients	Lake's Average Days since Admission	Stein Long-Term Commitment Clients	Stein Average Days since Admission
FY13	6	1,260		
FY14	9	1,207		
FY15	10	1,423	2	
FY16	10	1,660	2	250
FY17	10	1,699	2	615
FY18	13	1,656	3	767
FY19	15	1,825	3	1,112
FY20	14	2,213	3	1,314
FY21 YTD	14	2,435	4	1,314

Long-Term Commitments - Fiscal Year Averages



# ADULT FORENSIC FACILITIES: LONG-TERM COMMITMENTS

## Average Length of Stay (Days) – since admission





# Questions?



# Contact Information

**Lisa Sherych**

Administrator

[l.sherych@health.nv.gov](mailto:l.sherych@health.nv.gov)

775-684-5959

**Joanne Malay**

Deputy Administrator

[jmalay@health.nv.gov](mailto:jmalay@health.nv.gov)

702-486-8051

Division of Public and Behavioral Health

State of Nevada





# Acronyms

- NNAMHS – Northern Nevada Adult Mental Health Services
- SNAMHS – Southern Nevada Adult Mental Health Services
- HBIPS – Hospital-Based Inpatient Psychiatric Services
- BHC – Behavioral Health Care
- HAP – Hospital Accreditation Program
- FY – Fiscal Year
- YTD – Year to Date
- DHHS – Department of Health and Human Services